



DARROW SCHOOL

2024/2025 PROFILE | darrowschool.org

Contact: (518)704-2760
110 Darrow Road,
New Lebanon, NY 12125
www.darrowschool.org

School CEEB Code: 333350

Andrew Vadnais
Head of School
vadnaisa@darrowschool.org

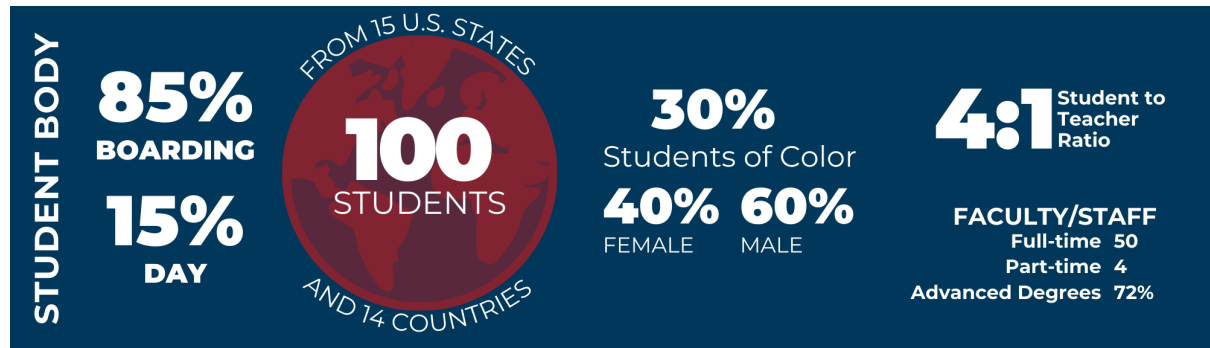
Vince Schmidt
Director of Admissions
schmidt@darrowschool.org

Lorrie Wechter
Registrar
wechterl@darrowschool.org

Jennifer Thorn
Director of College Counseling
thornj@darrowschool.org

A coed boarding and day school. A rigorous curriculum. A historic campus. A passionate community of individuals where all students belong! And that's just the beginning.

Life at Darrow School is full of options, offering students a comprehensive education and a vast selection of co-curricular activities that cater to their interests and talents, igniting their curiosity. With an average class size of 9, our faculty fully engages students and challenges them to do their best every day



Our Curriculum

A Darrow education is active, differentiated, and inclusive.

Active means that you are not just passively absorbing content but actively constructing knowledge and creating meaning. You'll experience dynamic labs, the writing process, projects, and presentations. Your work will connect to the real work of people in your discipline.

Differentiated means that our courses have clear learning goals in content and skills but offer flexibility in when and how students demonstrate their learning. Plus, we provide robust supports — office hours, additional scaffolding of assignments, supplementary materials, and coordination with Learning Skills coaches. At the same time, our faculty will challenge you in supportive ways to deepen or go beyond the core skills.

Inclusive means that our classes are welcoming, engaging, and appropriately rigorous because we honor a wide range of backgrounds, learning styles, and cultures. We work to ensure diversity in our readings, guest speakers, and lesson materials.

- 5 courses is considered a full course load with Hands-To-Work comprising a 6th course period (non-graded) for all students.
- Courses may be year-long or one semester.
- Algebra 2, Biology, Chemistry and US History all year-long required courses.
- Financial Literacy Seminar is a required course for Seniors.
- 2 SUPA dual Enrollment Courses added this year for post-grad students only.
- Students are required to take 2.0 credits in fine or performing arts.
- Additional support available includes the structured Learning Skills program.
- Foreign Languages offerings on campus include Spanish 1 and Spanish 2. Prior years have offered French 1 & 2 as well. No higher level language courses.
- Independent studies are allowed based on the students' needs and are graded pass/fail.
- Find course catalog at: www.darrowschool.org/academics/curriculum

Required Discipline Credits	
English	4.0
Social Studies	3.0
Mathematics	3.0
Science	3.0
Language	2.0
Visual/Performing Arts	2.0
Physical Education/Sports	1.0
Health	0.5
Financial Literacy	0.5
Electives	1.5
Total	= 20.5

ACADEMIC GRADE SYSTEM	Score Range
A+	97-100
A	93-96
A-	90-92
B+	87-89
B	83-86
B-	80-82
C+	77-79
C	73-76
C-	70-72
D+	67-69
D	63-66
F	below 63

- Students receive both Effort and Academic (A-F scale) grades each quarter
- Transcript reports semester grades only
- We do not rank students nor report a GPA
- GPA is calculated internally each quarter to determine Honors (3.5+) and High Honors (3.8+) status only

Hands-to-Work is a service learning and leadership program rooted in the purposeful traditions of the Shakers. All students spend 150 minutes per week, in small teams, engaged in service and skill building activities that improve our campus or our local community. They apprentice and rotate jobs to discover new interests and abilities. Through this year-long program, students gain real-world skills in commitment, leadership, problem-solving and collaboration that are needed in all future workplaces, in addition to the trades or work settings they experience. There are 15 placements in 2024-2025 including Construction & Repair (campus), Red Robin Animal Sanctuary (New Lebanon, NY), Bike Repair (campus) & Hancock Shaker Village Cafe and Museum (New Lebanon, NY)

Syracuse University Project Advance (SUPA) College Credit Program Darrow School is a partner of Syracuse University Project Advance (SUPA), a leading dual enrollment program offering college-level courses. Currently, 2 SUPA courses are offered. These courses are available to post grad students only. Starting next year, we will expand the program to include Seniors.

Learning Skills Program including Orton-Gillingham The Learning Skills Program is designed to offer educational and developmental assistance to students, ranging from material comprehension to college preparatory work. This includes individualized help with executive functioning such as organization, time management, project management, problem solving, and test taking, as well as subject-specific support. Orton Gillingham is an approach to literacy fundamentals that remediates language based learning disorders (LBDL) like dyslexia. Darrow is one of the few schools to offer OG at the high school level in one on one sessions. Both Learning Skills and Orton-Gillingham are crucial keys in the process of unlocking student potential, which is the cornerstone of Darrow School's philosophy and mission.

Student Learning Beyond the Classroom: We strive for students to become responsible citizens and community leaders. We offer many formal and informal opportunities for students to develop, organize and lead programs and activities on campus. Formal opportunities include Core Leaders, Resident Assistants, Student Government, and Prefects. Student Government leaders are elected by the student body. All other positions require students to apply and be selected by faculty and/or administration. Informal opportunities include clubs, social events, and holiday celebrations.

COLLEGE ACCEPTANCES 2020-2024

Adelphi University	Endicott College	Morehouse College	Union College
Alfred University*	Fairleigh Dickinson University*	Muhlenberg College*	University of California
Amherst College*	Flagler College*	New Jersey Institute of Technology	Santa Cruz*
Augusta University	Florida Southern College	Northern Vermont University	University of Colorado
Bard College*	Fordham University	Oberlin College*	Boulder
Bennington College*	Furman University	Pace University	University of Delaware
Berklee College of Music*	George Mason University	Paul Smith's College	University of Denver
Berry College*	George Washington University*	Penn State University*	University of Hartford
Bloomfield College	Georgetown University	Pratt Institute	University of Maine
Brevard College	Goucher College	Quinnipiac University	University of
Brown University*	Hampton University	Rensselaer Polytechnic Institute	Massachusetts Boston
Bryant University	Hamilton College	Rochester Institute of Technology*	University of
Bucknell University*	Haverford College	Roger Williams University	Massachusetts Lowell
Cal Poly Humboldt	Hobart and William Smith Colleges*	Russell Sage College*	University of New Haven*
Case Western Reserve University*	Hofstra University	Rutgers University	University of
Cazenovia College*	Howard University	Sacred Heart University	Pennsylvania*
Chapman University	Iona University	Saint Michael's College	University of Pittsburgh*
Clark Atlanta University*	Ithaca College*	Sarah Lawrence College*	University of Redlands
Clark University*	Juniata College	Seton Hall University*	University of Rochester
Clarkson University	Kean University	Siena College*	University of San
Colby College	Kent State University	Smith College*	Francisco
Colby-Sawyer College	Kenyon College*	Stanford University*	University of Vermont
College of Charleston	Lesley University	St. John's University NY	Ursinus College*
Colorado State University	Lewis & Clark College*	St. Lawrence University*	Vassar College
Columbia College (Chicago)	Louisiana State University	Stevens Institute of Technology	Villanova University*
Columbia University*	Loyola University New Orleans*	Stony Brook University	Virginia State University*
Connecticut College	Lycoming College	SUNY at Albany	Wentworth Institute of
CUNY John Jay College	Lynn University*	SUNY at New Paltz	Technology
Curry College*	Macalester College	SUNY at Purchase College*	Wesleyan University*
Dartmouth College*	Manhattanville College	SUNY College at Cortland	Western New England
DePauw University	Maryland Institute College of Art*	SUNY Oneonta	University
Dickinson College	Marymount Manhattan College	SUNY Polytechnic Institute	Wheaton College*
Drew University	Mass. College of Liberal Arts*	SUNY University at Buffalo*	Whittier College
Drexel University	Mass. College of Pharmacy and	Swarthmore College	Widener University
Duquesne University	Health Sciences	Syracuse University	Williams College*
Earlham College	McDaniel College	Temple University	Wingate University
Eckerd College	Merrimack College	The New School*	Worcester Polytechnic
Elmira College*	Miami University OH	The Ohio State University	Institute
Emerson College*	Montclair State University	Trinity College	Xavier University*

*Indicates College Matriculation